

# LOT 105 BELLEVUE COURT 'BELLEVUE' JIMBOOMBA QLD 4280



**Fresh Homes**  
BUILT NEW JUST FOR YOU

**FOR SALE**

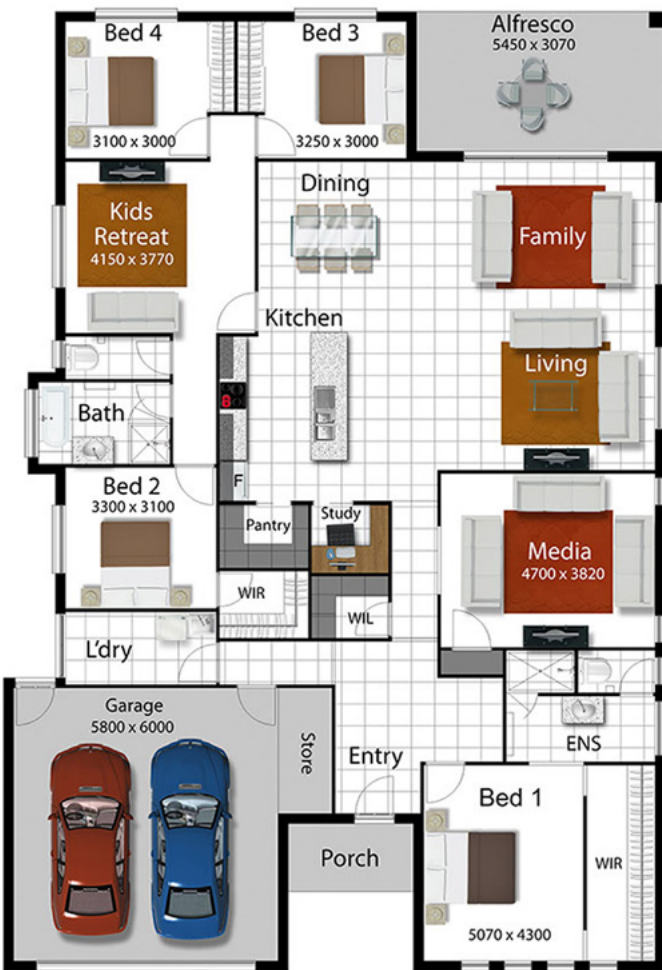
HOUSE AND LAND PRICE

**\$1,122,433**

4

2

2



## THE HAWKESBURY 285

Living Area	222.0m <sup>2</sup>
Garage Area	42.5m <sup>2</sup>
Alfresco Area	16.7m <sup>2</sup>
Porch Area	4.1m <sup>2</sup>
<b>Total Area</b>	<b>285.3m<sup>2</sup></b>

**LAND SIZE 9921m<sup>2</sup>**

### PACKAGE INCLUDES:

- 25 years Structural Guarantee\*
- 6 Star Energy Rating
- Bathroom & Ensuite Stone Tops
- HSTP with Irrigation System
- Builder's Persona Range Tiles & Carpet
- 2550mm High Ceilings
- 1200mm wide front entry door
- 10,000 gallon water tank
- Exposed Aggregate Driveway
- Electrical Allowance
- Site Costs Allowance
- TV Antenna
- \$25,000 Freebies Upgrade

**LEE ROEBUCK**  
**PH: 0413 057 335**

lee.roebuck@freshhomes.com.au



**Fresh Homes**  
BUILT NEW JUST FOR YOU

Brisbane | Ipswich | Gold Coast | Sunshine Coast | Townsville

freshhomes.com.au

Plan and images are for illustration only. All elevations are masonry block with painted architectural textured coating. Brick finishes apply to SEQ only. Floor plan and elevation as shown in this brochure are artists impressions only and do not form any part of the contract to build. Standard plans and specifications take precedence over any design, elevation or brochure. These designs are exclusively the property of Fresh Homes and as such as copyright. QBCC1088603. Prices may change without notice. \*Applies to building structure only.