

# LOT 540 WHIPPET CRESCENT ELLIOT SPRINGS | JULAGO



**FreshHomes**  
BUILT NEW JUST FOR YOU

**FOR  
SALE**

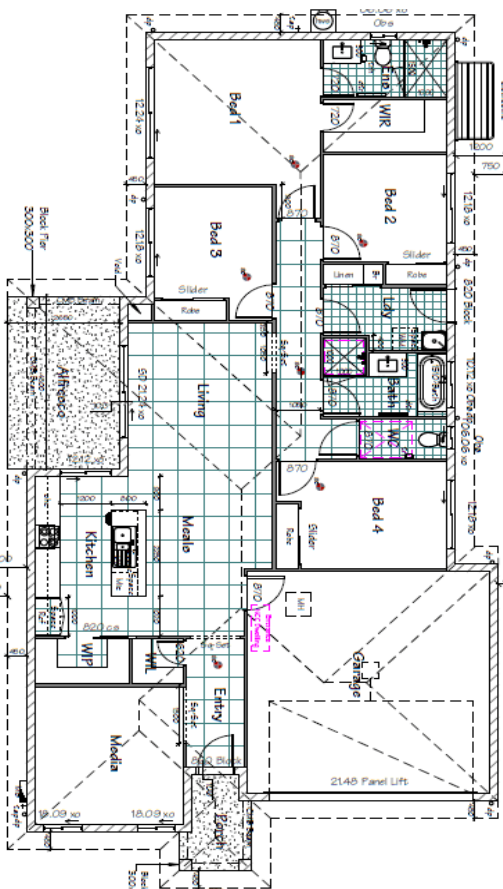
HOUSE AND  
LAND PRICE

**\$727,553**

4

2

2



## THE MAYBROOK 200

### GREAT FIRST HOME PACKAGE AT ELLIOT SPRINGS.

Build your brand new home with multiple award-winning builder Fresh Homes at Elliot Springs Estate.

The Maybrook 200 design is a smart innovative floor plan boasting plenty of space for the growing family. The design offers four bedrooms, media room/formal lounge, galley style kitchen with walk-in pantry overlooking the living/family area that leads out onto the alfresco on a Courtyard block with double side gate access.

#### PACKAGE INCLUDES:

- 25 Years structural guarantee\*
- Panasonic Split Systems throughout
- Security Screen & Key window locks
- CUSTOM made kitchen by Moduline
- Quality Appliances with 5 years warranty
- Elegant stone bench tops to kitchen
- NBN Connection/SOLAR Ready
- LED Down Lights
- Stone Aggregate Driveway
- Double Side gate access & shared fencing
- Wall mount Clothesline & letterbox
- River gravel to narrow side
- Gardens & Turf to the whole block

Living Area	147.3m <sup>2</sup>
Garage Area	35.9m <sup>2</sup>
Alfresco Area	13.1m <sup>2</sup>
Porch Area	4.4m <sup>2</sup>
<b>Total Area</b>	<b>200.7m<sup>2</sup></b>

**LAND SIZE 525m<sup>2</sup>**

**JASON JONES**

**PH: 0406 485 392**

jason.jones@freshhomes.com.au



**FreshHomes**  
BUILT NEW JUST FOR YOU

Brisbane | Ipswich | Gold Coast | Sunshine Coast | Townsville

freshhomes.com.au

Plan and images are for illustration only. All elevations are masonry block with painted architectural textured coating. Brick finishes apply to SEQ only. Floor plan and elevation as shown in this brochure are artists impressions only and do not form any part of the contract to build. Standard plans and specifications take precedence over any design, elevation or brochure. These designs are exclusively the property of Fresh Homes and as such as copyright. QBCC1088603. Prices may change without notice. \*Applies to building structure only.