

# THE HAWKESBURY 268



Living Area	209.8m <sup>2</sup>
Garage Area	41.2m <sup>2</sup>
Alfresco Area	13.5m <sup>2</sup>
Porch Area	4.1m <sup>2</sup>
<b>Total Area</b>	<b>268.6m<sup>2</sup></b>

4 

2 

2 

## FRESH FEATURES:

- 25 Year Structural Guarantee\*
- No Termites Ever!
- Fully Air Conditioned
- Quality Kitchens, Bathrooms, Carpets and Tiles
- Quality European Appliances with 5 Year Warranty



**FreshHomes**  
BUILT NEW JUST FOR YOU

Visit [FreshHomes.com.au](https://www.freshhomes.com.au) for the location of your nearest Fresh Homes Display Centre & Design Consultant.

Plan and images are for illustration purposes only and may show items that are not included. Floor plan and elevation shown in this brochure are artist impressions only and do not form any part of any offer or contract to build. Standard master plans and selected specifications take precedence over any artist impression, design, elevation or brochure. Designs and images are exclusively the property of Fresh Homes and as such are copyright. Prices and inclusions may change without notice.\*Applies to building structure only. QBCC1088603.

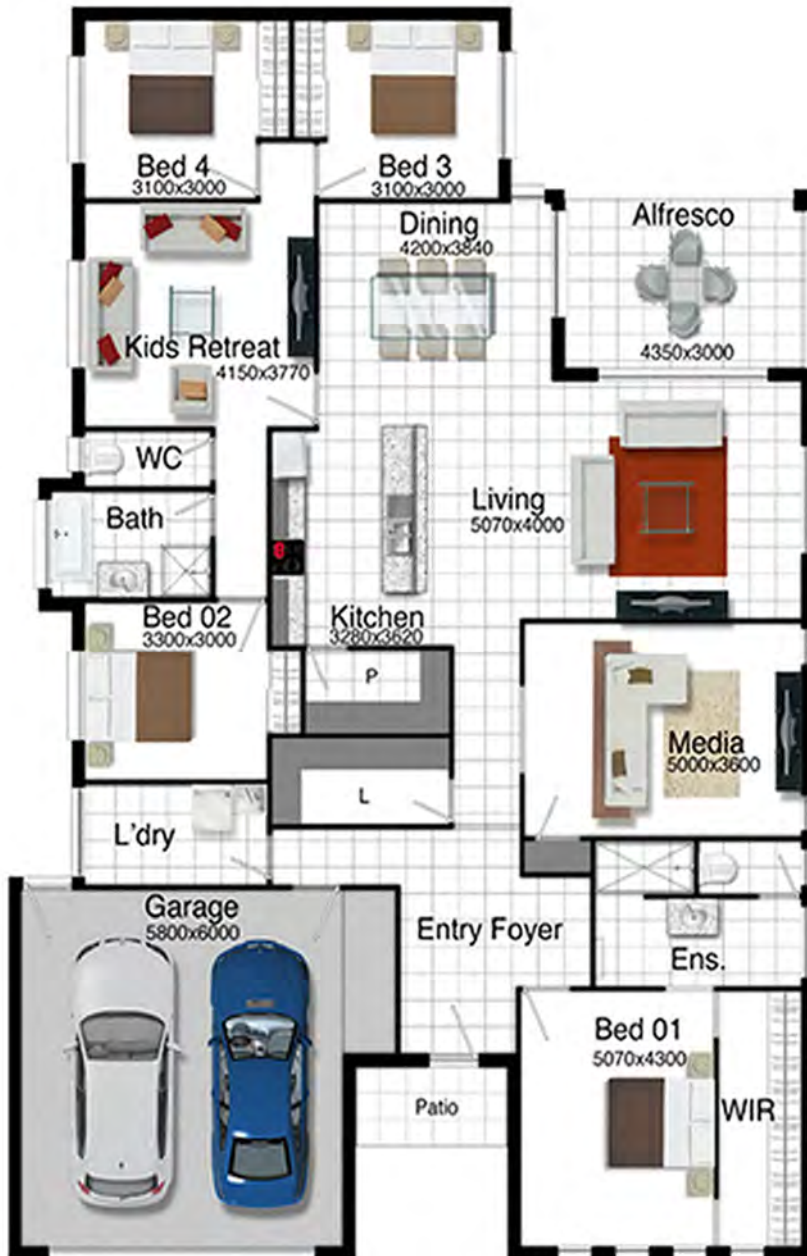


# THE HAWKESBURY 268 | NORTH QLD

4 

2 

2 



14.50m

**House Width** 14.5m  
**Allotment Width\*** 20m  
 (\*minimum required)

**Living Area** 220.0m<sup>2</sup>  
**Garage Area** 42.5m<sup>2</sup>  
**Alfresco Area** 16.7m<sup>2</sup>  
**Porch Area** 4.1m<sup>2</sup>  
**Total Area** 285.3m<sup>2</sup>



[CLICK HERE](#) to see  
**PERSONA** inclusions  
 or scan the QR code.

*\*Minimum allotment width is indicative only and provided for general use as a guide only. Minimum allotment width may require reduced setbacks and may be subject to the developments plan of development and/or relevant state government development codes and/or local government by-laws. The builder provides no guarantee that a selected design will fit on a allotment regardless of the minimum allotment width provided by the builder. It remains the sole responsibility for Owners to ensure that any selected design will fit on their land.*

**Townsville PH:** (07) 4773 5865  
**SE QLD PH:** (07) 3806 0603  
**Head Office:** 4067 Pacific Highway  
 Loganholme QLD 4129  
**Email:** [info@freshhomes.com.au](mailto:info@freshhomes.com.au)  
**Website:** [freshhomes.com.au](http://freshhomes.com.au)  
**QBCC licence:** 1088603

