

# THE PARKLANE 189



Living Area 134.3m<sup>2</sup>  
Garage Area 36.3m<sup>2</sup>  
Alfresco Area 15m<sup>2</sup>  
Porch Area 4.2m<sup>2</sup>  
**Total Area 189.8m<sup>2</sup>**

3 

2 

2 

## FRESH FEATURES:

- 25 Year Structural Guarantee\*
- Fully designed and inspected by a qualified engineer
- Quality European Appliances
- Designs can be modified to suit individual needs
- 6 Star Energy Rating • Generous under roof entertainment area



**FreshHomes**  
BUILT NEW JUST FOR YOU

Visit [FreshHomes.com.au](https://www.freshhomes.com.au) for the location of your nearest Fresh Homes Display Centre & Design Consultant.

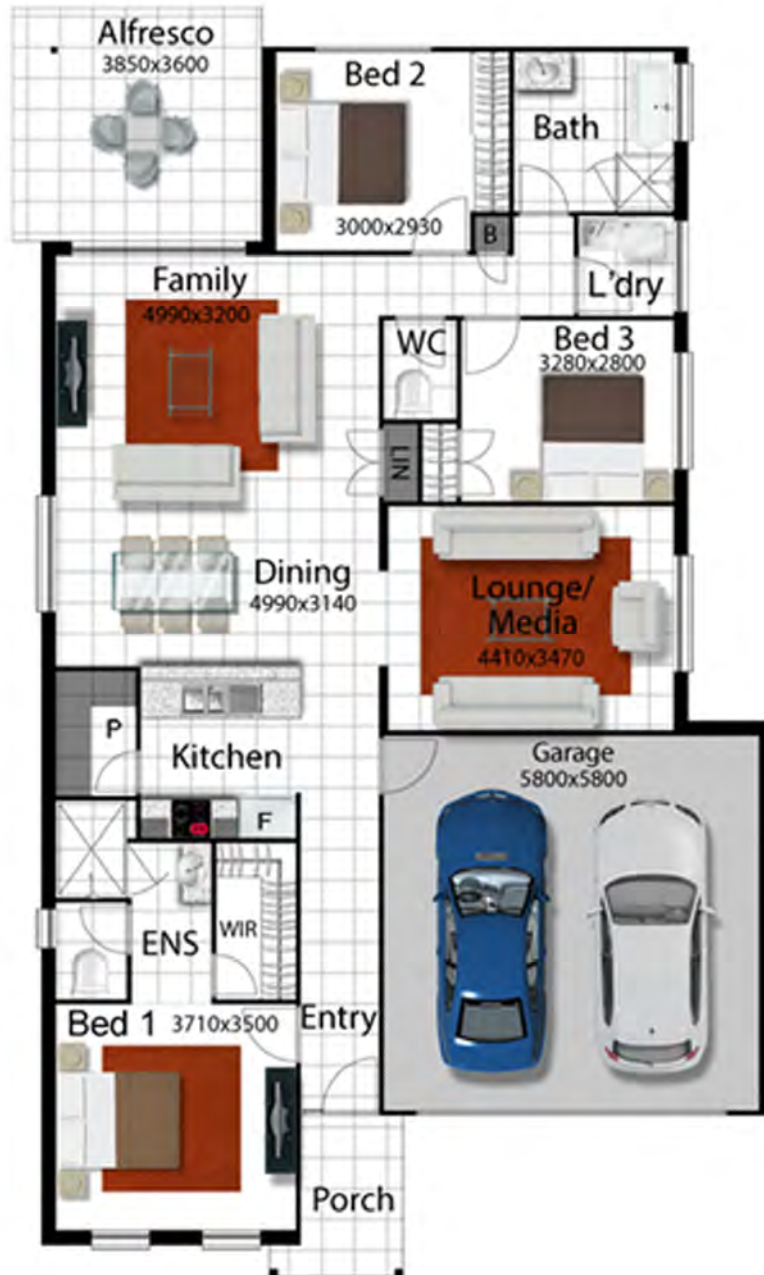
Plan and images are for illustration only. Floor plan and elevation shown in this brochure are artists impressions only and do not form any part of the contract to build. Standard plans and specifications take precedence over any design elevation or brochure. These designs are exclusively the property of Fresh Homes and as such are copyright. QBCC 1088603. Prices may change without notice. \*Applies to building structure only.

# THE PARKLANE 189

3 

2 

2 



10.5m

19.67m

**House Width** 10.5m  
**Allotment Width** 11.6m  
*(minimum required)*

**Living Area** 134.3m<sup>2</sup>  
**Garage Area** 36.3m<sup>2</sup>  
**Alfresco Area** 15m<sup>2</sup>  
**Porch Area** 4.2m<sup>2</sup>  
**Total Area** 189.8m<sup>2</sup>

**SE QLD PH:** (07) 3806 0603

**Townsville PH:** (07) 4773 5865

**Head Office:** 4067 Pacific Highway  
 Loganholme QLD 4129

**Email:** [info@freshhomes.com.au](mailto:info@freshhomes.com.au)

**Website:** [freshhomes.com.au](http://freshhomes.com.au)

**QBCC licence:** 1088603

